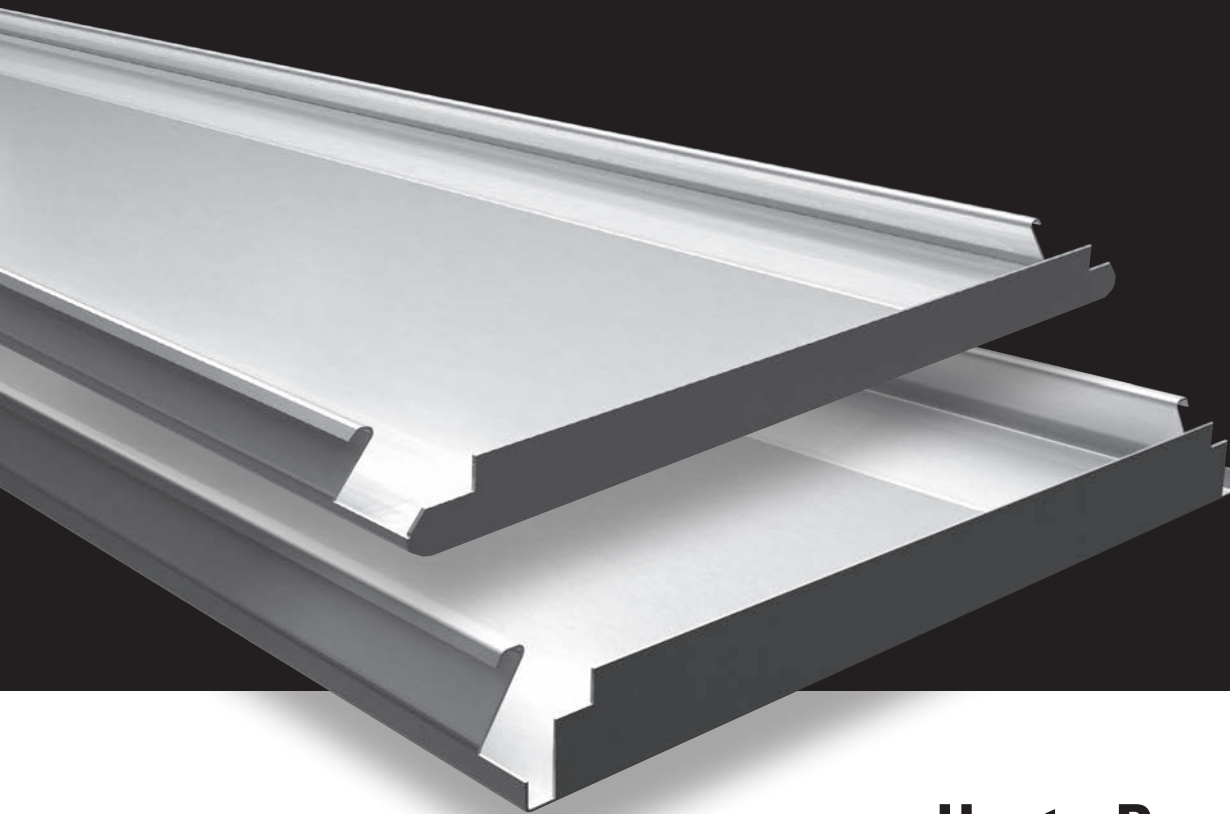


Wide Panel 300C/L Lay-On

Hunter Douglas Wide Panel Ceilings enables the architect to design a closed ceiling with high performance aluminium or steel materials. In order to give maximum freedom in design there is a wide choice in panels with soft edges for a monolithic ceiling appearance or panels with square edges which results in a smooth ceiling with a narrow butt joint.



HunterDouglas 
Architectural

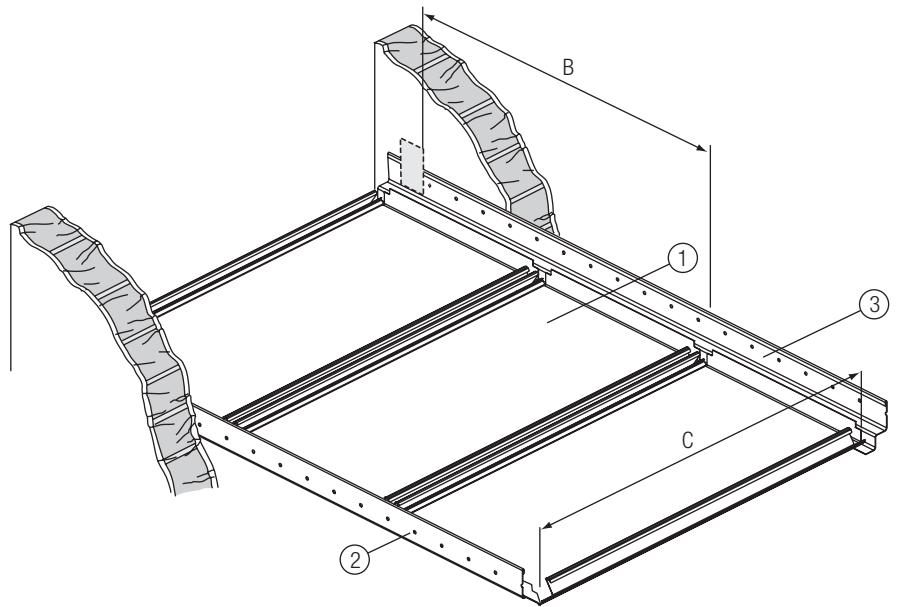
300C/L Lay-on

PANELS

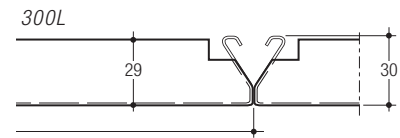
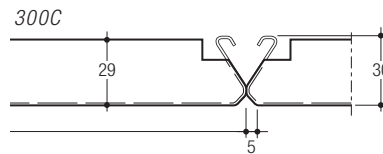
300C/L Lay-on panels are designed to be installed on wall angles.

SUSPENSION

The panels are supported at their ends by wall angle profiles (2 & 3). The panels have straight upstands at the panel ends. When accessing the plenum the panels can be lifted and stacked onto adjacent installed panels to avoid having to lower the panels down to the floor.

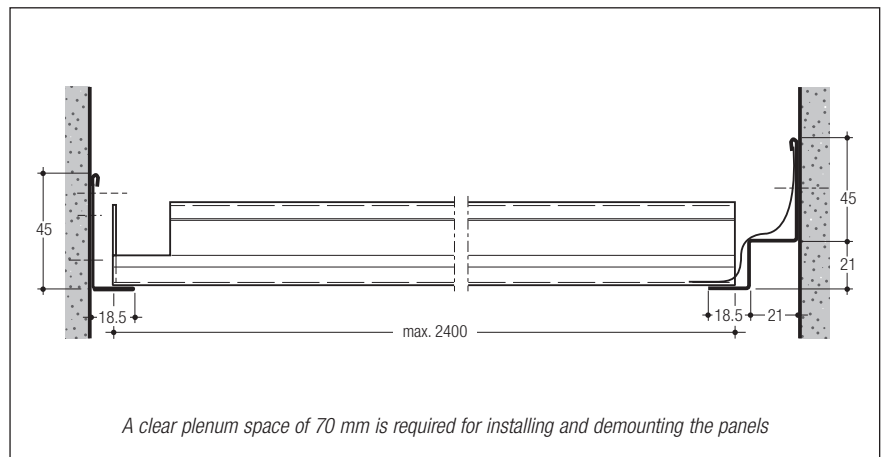


- 1 = lay-on panel
- 2 = wall L-profile
- 3 = wall W-profile



CONSTRUCTION DETAILS

L or W steel edge profiles can be used as perimeters.



MAXIMUM SPANS

Panel type	Panel Span C	Fixing distance	
		B with fixing piece	B direct fixed
Alu 0.7	2400	700	300
Steel 0.6	2400	500	300

DIMENSIONS & WEIGHTS

Panels from 250-1000 mm are available on request. Weight based on 2400 mm panels.

Panel	Width	Min. length	Max. length	Weight/m ²
Alu 0.7	300	1000	2400	2.5 kg
Steel 0.6				6.0 kg

MATERIAL REQUIREMENT PER M²

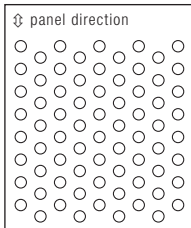
Requirements are based on using panels with a length of 2400 mm.

	Unit	300C/L Lay-on system
Lay-on panels	lm	3.33
Wall profile	lm	0.83

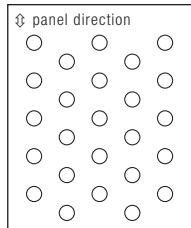
Acoustics

PERFORATION OPTIONS

Panels can be supplied perforated with a \varnothing of 1.5 or 2.0 mm (open area of 23% and 16%). As a standard feature, perforated panels are supplied with a sound absorbing non-woven tissue glued into the panel for enhanced acoustical performance.

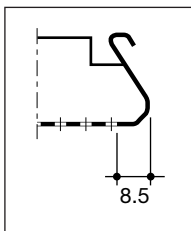


D1523
 \varnothing 1.5 mm
 23% open area
 Δ 3 mm



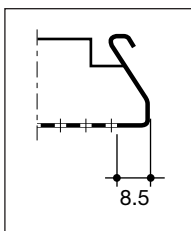
D2016
 \varnothing 2.0 mm
 16% open area
 Δ 5 mm

300C



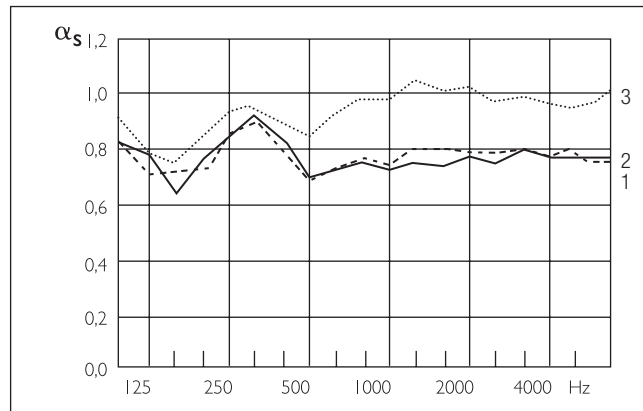
Note: Panels have a nominal plain border of 8.5 mm along the longitudinal panel direction in order to assure maximum flatness and product stability.

300L



Note: Panels have a nominal plain border of 8.5 mm along the longitudinal panel direction in order to assure maximum flatness and product stability.

SOUND ABSORPTION DATA 300C/L



300C/L

α_s = sound absorption degree:
 an absorption of 1.0 indicates a 100% absorption of sound.

- Curve 1 α_s 300C/L

\varnothing 2.0 mm perforated panels, provided with 0.2 mm thick, black non-woven acoustic tissue glued over the whole perforated area. Plenum depth is 400 mm.

- Curve 2 α_s 300C/L

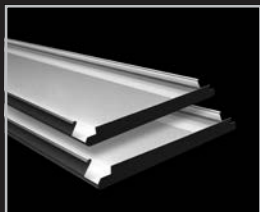
\varnothing 1.5 mm perforated panels, provided with 0.2 mm thick, black non-woven acoustic tissue glued over the whole perforated area. Plenum depth is 400 mm.

- Curve 3 α_s 300C/L

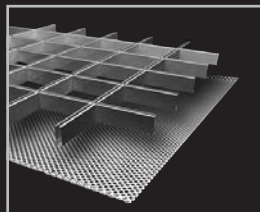
\varnothing 1.5 mm perforated panels, provided with 0.2 mm thick, black non-woven acoustic tissue glued over the whole perforated area plus 25 mm thick mineral wool pad with a density of 16 kg/m³. Plenum depth is 400 mm.

Freq. Hz.	125	250	500	1000	2000	4000	α_w
Curve 1	0.70	0.81	0.69	0.77	0.79	0.79	0.75(L)
Curve 2	0.68	0.83	0.70	0.74	0.76	0.78	0.75(L)
Curve 3	0.79	0.93	0.84	0.99	1.01	0.96	-

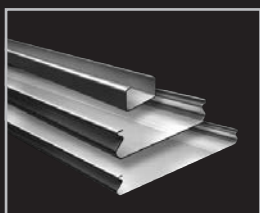
*The 300C Wide Panel ceilings were tested by TNO Delft (The Netherlands), an independent official testing institute. Report no.: TPD-HAG-RPT-94-0037
 300L panel due to shape similar performance as 300C panel.*



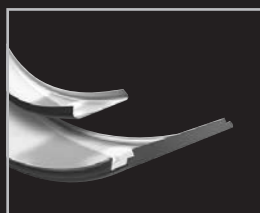
Wide Panel



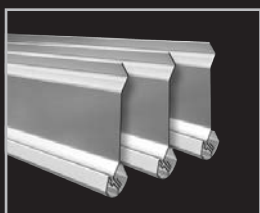
Cell | Stretch metal



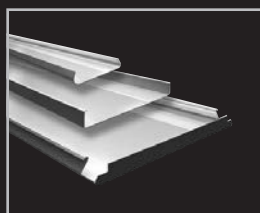
Linear



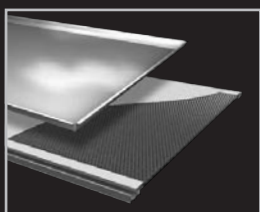
Curved



Screen



Exterior



Tiles | XLnt panel

- Belgium
- Bulgaria
- Croatia / Slovenia
- Czech Republic
- Denmark
- France
- Germany
- Greece
- Hungary
- Italy
- The Netherlands
- Norway
- Poland
- Portugal
- Romania
- Russia
- Serbia
- Slovakia
- Spain
- Sweden
- Switzerland
- Turkey
- United Kingdom
- Africa
- Middle East

- Asia
- Australia
- Latin America
- North America



Produced by
Hunter Douglas
Ceiling Center



Hunter Douglas Architectural

Piekstraat 2
P.O. Box 5072 - 3008 AB Rotterdam
The Netherlands
Tel. +31 (0)10 - 486 99 11
Fax +31 (0)10 - 484 79 10
www.hunterdouglasarchitectural.eu

© Registered trademark - a HunterDouglas® product Pats. & Pats. Pend. -
Technical data subject to change without notice. © Copyright Hunter Douglas 2018.
No rights can be derived from copy, text pertaining to illustrations or samples.
Subject to changes in materials, parts, compositions, designs, versions, colours etc.,
even without notice. MX071Z00